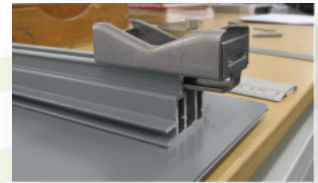




POST FIX INSTRUCTIONS. IMPORTANT: PLEASE READ BEFORE INSTALLING.

1. Slide Universal Channel Clamp into Channel as Shown:



2. Undo the Tamtorque Clip using a Flathead screwdriver.



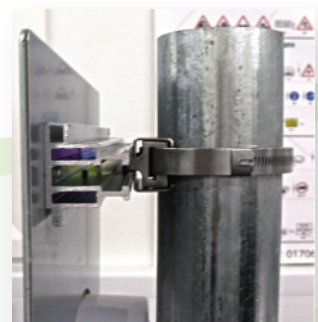
3. Slide the clip through the channel clamp as shown:



4. Wrap the clip around the post, close, and tighten back up as shown:



5. Tuck the excess band into the slider as shown so not to catch on anything or anyone.



LIMELIGHT

Signs

If you require help with this product, please call us on 01706 873866.